

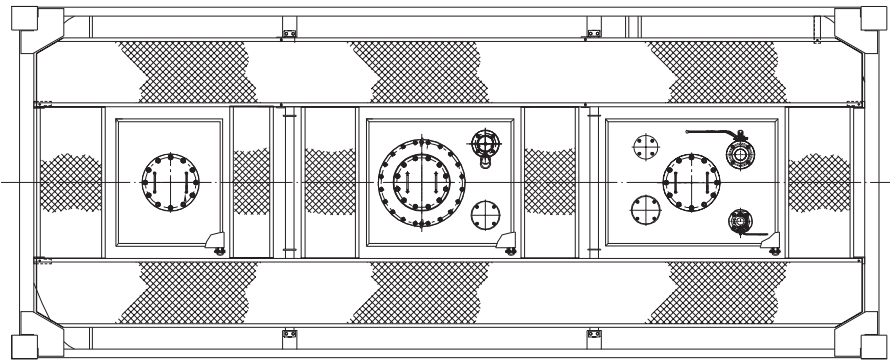
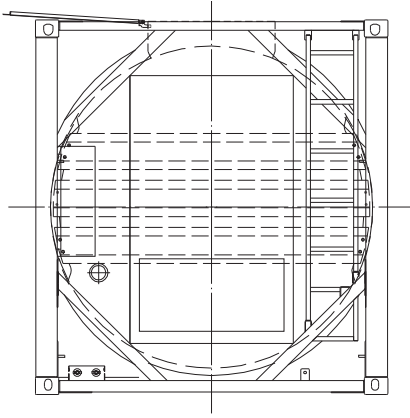
T20 22,500 LITER

'U' Stamped Tank



22,500 LITER

EXSIF
WORLDWIDE



T20 22,500 LITER

'U' Stamped Tank

General Specification

Dimensions (TD1) mm	ft-in	Internal Finish	Hot rolled ASTM 1D finish, interior acid cleaned.	Baffles	2 sets of stainless steel baffles.
Length	6,058	20' 0"		Steam Heating System	8 off runs producing an effective heating area of 7.5 sq. meters (80.7 sq. ft) at 4 Bar (58 psi) working pressure with 1 1/2" BSP inlet and 1" BSP outlet connections.
Width	2,438	8' 0"		Insulation	100mm Glasswool insulation with 2mm GRP cladding.
Height	2,591	8' 6"		Options	Linings, super-insulation, handrails, level gauge, electrical heating.
Capacity	Liters	US Gallons	Weights	kgs	lbs
	22,500	5,944	Tare	4,950	10,913
			Max Payload	31,050	68,454
Shell Material	316L Stainless Steel		Fittings		
Barrel/Head Thickness	8.0 mm EMS (0.31")		Manlid	500mm, bolted blank flange with 20 fixings. Intergrated 150mm cleaning port.	
Pressures	Working = 6.67 Bar (97 psi) Test = 10.0 Bar (145 psi) Vacuum = 1.0 Bar (14.5 psi)		Air Line	DN50 flanged ball valve with pressure gauge.	
Design Temp	130°C (266°F)		Vapor Return	DN50 flanged ball valve with pressure gauge.	
Design Code	ASME VIII Division 1 - 'U' Stamp		Top Outlet	DN80 Fort Vale flanged ball valve.	
External Finish	3 coat system with a Zinc rich primer.		Top Fill	DN80 Fort Vale flanged ball valve.	
			Cleaning Ports	150 mm cleaning ports located between baffles.	
			Safety Relief Valve	3" flanged pressure only with bursting disc fitted.	
			Thermometer	Surface type gauge -20°C to +140°C (-4°F/+284°F).	
				Approvals	UN Portable tank (T20) IMDG, CFR49, ADR/RID, UIC, TIR, CSC, TC, AAR, ADR/RID L10DH. ASME U-stamp.
				Other Capacities	
				From	Liters US Gallons 14,500 3,831

Note: The above information is an average representation of technical data. Please consult your EXSIF Worldwide representative for more specific data.

EXSIF Worldwide, Inc.
Corkstraat 46
Rotterdam 3047 AC
The Netherlands
Tel: + 31-10-240-40-20
Fax: + 31-10-240-40-29
email: sales.europe@exsif.com

EXSIF Worldwide, Inc.
1225 North Loop West, Suite 300
Houston, TX 77008
United States
Tel: + 1-713-869-9988
Fax: + 1-713-869-7827
email: sales.americas@exsif.com

EXSIF Worldwide, Inc.
80 Anson Road
#24-01A Fuji Xerox Towers
Singapore 079907
Tel: + 65-6224-2633
Fax: + 65-6224-2634
email: sales.asia@exsif.com

EXSIF Worldwide, Inc.
Shanghai Kerry Center
Unit 1502
1515 West Nanjing Road
Shanghai 200040
People's Republic of China
Tel: + 86-21-6289-1230
Fax: + 86-21-6289-1223
email: sales.china@exsif.com

EXSIF
WORLDWIDE

Visit our web site www.exsif.com

Headquarters: EXSIF Worldwide, Inc., 2700 Westchester Avenue, Suite 400, Purchase, NY 10577, United States.
Tel: + 1-914-848-4200 Fax: + 1-914-848-4201 Contact: contact@exsif.com