

T22 22,500 LITRE

Full Frame Tank
'U' Stamped
Steam Heated
Insulated
Baffled

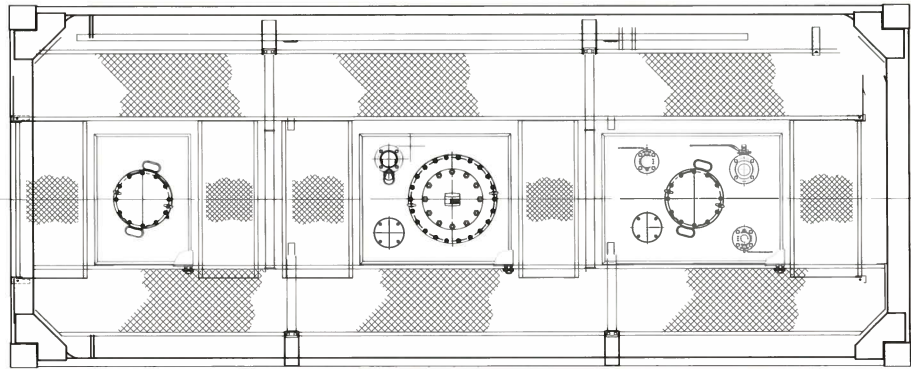
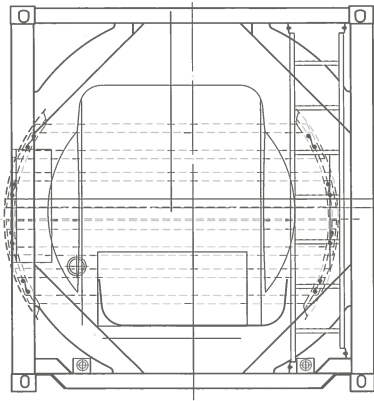


22,500 LITRE

EXSIF
WORLDWIDE



A Marmon/Berkshire Hathaway Company



T22 22,500 LITRE

'U' Stamped Tank

General Specification

Dimensions (TD1) mm	ft-in	Internal Finish	Hot rolled ASTM 1D finish, interior acid cleaned.	Baffles	2 sets of stainless steel baffles.
Length	6,058	20' 0"		Steam Heating System	8 off runs producing an effective heating area of 10 sq. metres at 6 Bar (87 psi) working pressure with 1" BSP inlet and 3/4" BSP outlet connections.
Width	2,438	8' 0"		Insulation	100mm Rockwool insulation with 2mm GRP cladding.
Height	2,591	8' 6"		Options	Linings, super-insulation, handrails, level gauge, electrical heating.
Capacity	Litres	US Gallons	Weights	kgs	lbs
	22,500	5,944	Tare	5,935	13,084
			Max Payload	30,065	66,281
Shell Material	316L Stainless Steel		Fittings		
Barrel/ Head Thickness	10.0 mm EMS		Manlid	500mm, bolted blank flange with 22 fixings. Intergrated 300mm cleaning port.	
Pressures	Working = 6.67 Bar (97 psi) Test = 10.0 Bar (145 psi) Vacuum = 1.0 Bar (14.5 psi)		Air Line	DN50 flanged ball valve with pressure gauge.	
Design Temp	-40°C – 130°C		Vapour Return	DN50 flanged ball valve.	
Design Code	ASME VIII Division 1 - 'U' Stamp		Top Outlet	DN80 Fort Vale flanged ball valve with syphon tube.	
External Finish	3 coat system with a Zinc rich primer.		Top Fill	DN80 provision.	
			Cleaning Ports	300 mm cleaning ports located between baffles.	
			Safety Relief Valve	3" flanged pressure only with bursting disc and gauge.	
			Thermometer	Surface type gauge -20°C to +160°C (-4°F/+320°F).	
				Approvals	UN Portable tank (T22) IMDG, CFR49, ADR/RID, UIC, TIR, CSC, TC, AAR, ADR/RID L10DH. ASME U-stamp.
				Other Capacities	
				From	Litres 14,500 US Gallons 3,831

Note: The above information is an average representation of technical data. Please consult your EXSIF Worldwide representative for more specific data.

EXSIF Worldwide GmbH
Kaiserswerther Markt 10
40489 Düsseldorf
Germany
Tel: + 49-211-4361750
Fax: + 49-211-43617529
email: sales.europe@exsif.com

EXSIF Worldwide, Inc.
1225 North Loop West, Suite 300
Houston, TX 77008
United States
Tel: + 1-713-869-9988
Fax: + 1-713-869-7827
email: sales.americas@exsif.com

EXSIF Worldwide, Inc.
80 Anson Road
#24-01A Fuji Xerox Towers
Singapore 079907
Tel: + 65-6224-2633
Fax: + 65-6224-2634
email: sales.asia@exsif.com

EXSIF Worldwide, Inc.
Shanghai Kerry Center
Unit 1607
1515 West Nanjing Road
Shanghai 200040
People's Republic of China
Tel: + 86-21-6289-1230
Fax: + 86-21-6289-1223
email: sales.china@exsif.com

EXSIF
WORLDWIDE

Visit our web site www.exsif.com

Headquarters: EXSIF Worldwide, Inc., 2700 Westchester Avenue, Suite 400, Purchase, NY 10577, United States.
Tel: + 1-914-848-4200 Fax: + 1-914-848-4201 Contact: contact@exsif.com