

T50 24,600 LITER

Gas Tank
Non-Refrigerated
Liquefied Gas

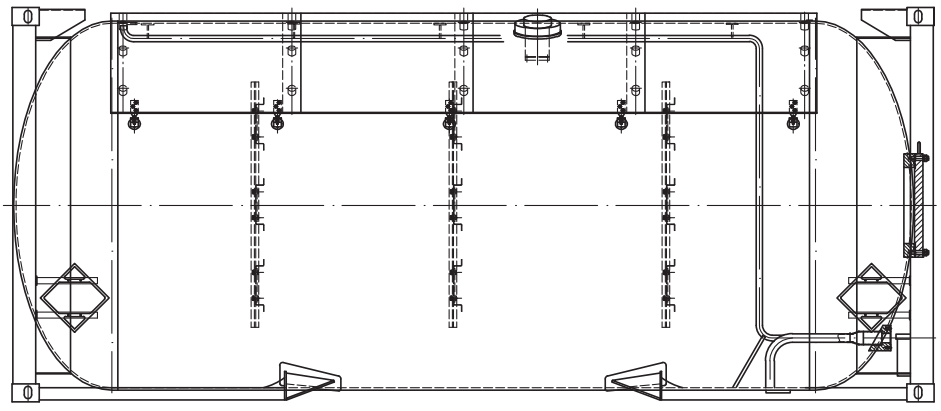
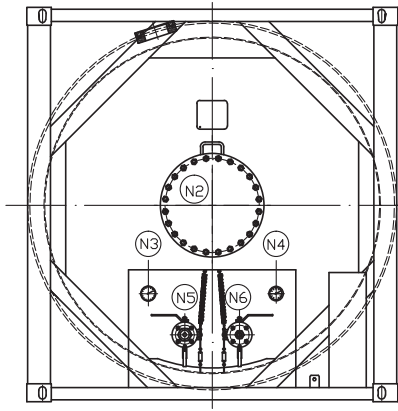


24,600 LITER

EXSIF
WORLDWIDE



A Marmon Group/Berkshire Hathaway Company



T50 24,600 LITER

Non-Refrigerated Liquified Gas Tank

General Specification

Dimensions	mm	ft-in	Internal Finish	Zinc lined to EN 22063	Gaskets	All are PTFE sealing face
Length	6,058	20' 0"	Weights	kgs lbs	Baffles	3 sets of stainless steel baffles.
Width	2,438	8' 0"	Tare	7,480 16,490	Volume Gauge	Provision.
Height	2,591	8' 6"	Max Payload	28,520 62,875	Insulation	Sunshield covering top third.
Capacity	Liters	Gallons	Fittings		Approvals	UN Portable tank (T50) IMDG, CFR49, ADR/RID, UIC, TIR, CSC, TC, AAR, MITI, CS (Chinese SELO).
	24,600	6,500	Manlid	500mm in rear dome.	Other Capacities	
Shell Material	Carbon Steel P460 NL1		Reference Temperatures	-40°C + 55°C	from	Liters US Gallons
Barrel/Head Thickness	15.0/16.7mm (0.59/0.66")		Gas/Liquid Fittings	DN50 (2") Internal valve plus DN50 (2") ball valve terminate in a 1 1/4" / 3/4" gas/liquid ACME connector. Safety valves can be remotely closed. Internal mixing pipe to front of barrel.		16,000 4,227
Pressures	UN Portable Working = 27.5 Bar (399 psig) US DOT Working = 25.0 Bar (363 psig) MITI Test = 46.0 Bar (667 psig)		Safety Relief Valve	DN80 (3") valve set at 27.5 Bar with provision for a bursting disc.	Other Working Pressures up to	34.5 Bar (500 psig)
Design Code	ASME VIII Division 2, 'U' Stamp, AD 2000 Merkblatt		Pressure Gauge	0-40 bar		
			Thermometer	-60° to +100°C		
			Compartment	The gas and liquid valving is contained by lockable doors.		

Note: The above information is an average representation of technical data. Please consult your EXSIF Worldwide representative for more specific data.

EXSIF Worldwide, Inc.
Corkstraat 46
Rotterdam 3047 AC
The Netherlands
Tel: + 31-10-240-40-20
Fax: + 31-10-240-40-29
email: sales.europe@exsif.com

EXSIF Worldwide, Inc.
1225 North Loop West, Suite 300
Houston, TX 77008
United States
Tel: + 1-713-869-9988
Fax: + 1-713-869-7827
email: sales.americas@exsif.com

EXSIF Worldwide, Inc.
80 Anson Road
#24-01A Fuji Xerox Towers
Singapore 079907
Tel: + 65-6224-2633
Fax: + 65-6224-2634
email: sales.asia@exsif.com

EXSIF Worldwide, Inc.
Shanghai Kerry Center
Unit 1502
1515 West Nanjing Road
Shanghai 200040
People's Republic of China
Tel: + 86-21-6289-1230
Fax: + 86-21-6289-1223
email: sales.china@exsif.com

EXSIF
WORLDWIDE

Visit our web site www.exsif.com

Headquarters: EXSIF Worldwide, Inc., 2700 Westchester Avenue, Suite 400, Purchase, NY 10577, United States.
Tel: + 1-914-848-4200 Fax: + 1-914-848-4201 Contact: contact@exsif.com