

T11 26,000 LITER

Beam Tank
Steam Heated
Insulated

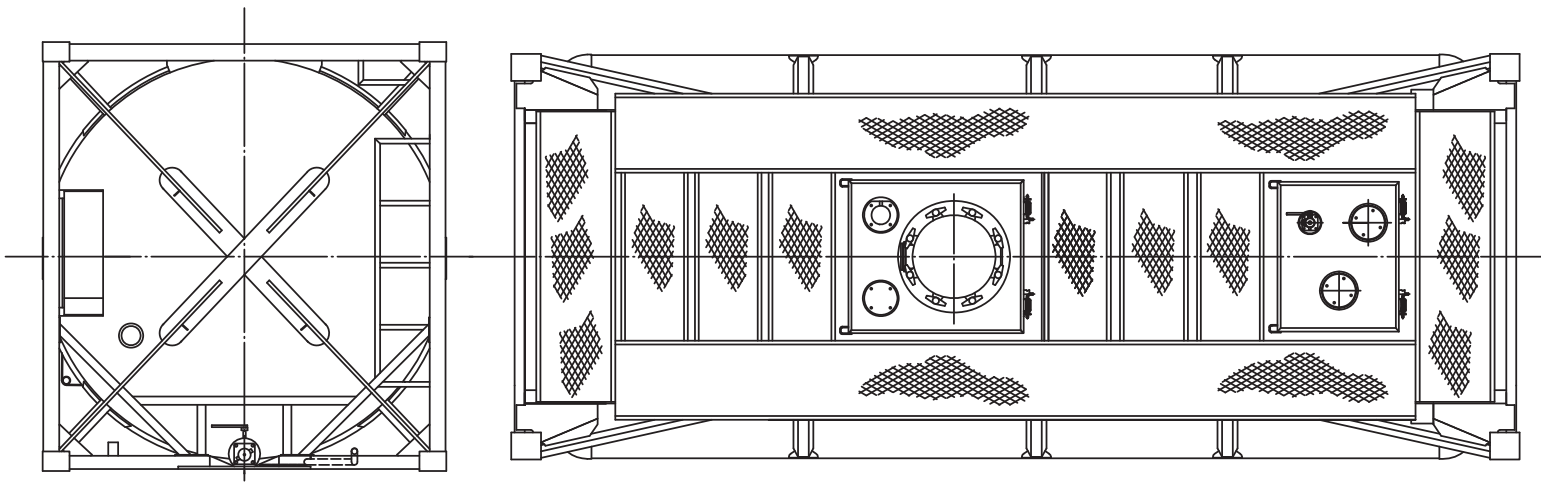


26,000 LITER

EXSIF
WORLDWIDE



A Marmon Group/Berkshire Hathaway Company



T11 26,000 LITER

Beam Tank

General Specification

Dimensions	mm	ft-in	Weights	kgs	lbs	Steam Heating System	6 off runs producing an effective heating area of 7.7m ² at 4 Bar (58 psi) working pressure with 1" BSP inlet and 3/4" BSP outlet connections.
Length	6,058	20' 0"	Tare	3,660	8,069	Walkway	Full walkway and handrail options.
Width	2,438	8' 0"	Max Payload	32,340	71,297	Insulation	Sandwich of 25mm polyurethane foam over 25mm glasswool with outer GRP cladding sealed by stainless steel banding.
Height	2,591	8' 6"	Fittings			Approvals	UN Portable tank (T11) IMDG, CFR49, ADR/RID, UIC, TIR, CSC, TC, AAR, ADR L4BN.
Capacity	Liters	Gallons	Manlid	Fort Vale 500mm, fully hinged with 8 fixings.		Options	Capacities from 12,000 liters (3,170 USG) to 26,000 liters (6,869 USG). Electrical/glycol heating. Linings. Baffles or compartments. Super Insulation. T14 Top Outlet Only. Bursting disc fitted.
	26,000	6,868	Air Line	1 1/2" Fort Vale stainless steel ball valve with a 1 1/2" BSP termination.			
Shell Material	316L Stainless Steel		Bottom Outlet	3" 45° stainless steel foot valve, butterfly valve with a 3" BSP termination. Remote closure system with fusible link fitted.			
Barrel/Head Thickness	4.6/6.2mm (0.181/0.244")		Top Outlet	3" nominal bore dual drilled pad, closed by a blind flange.			
Pressures	Working = 4 Bar (58.0 psi) Test = 6 Bar (87.0 psi) Vacuum = 0.4 Bar (5.9 psi)		Spare Connection	3" nominal bore dual drilled pad, closed by a blind flange.			
Design Temp	130°C (266°F)		Safety Relief Valve	3" flanged high flow valve set at 4.4 Bar (63.8 psi).			
Design Code	ASME VIII Division 1		Thermometer	Surface type gauge reading -40°C to +160°C (-40°F/+320°F).			
External Finish	3 coat system with zinc rich primer.						
Internal Finish	Cold rolled ASTM 2B, interior acid cleaned and certified for the carriage of foodstuff.						

Note: The above information is an average representation of technical data. Please consult your EXSIF Worldwide representative for more specific data.

EXSIF Worldwide, Inc.
Corkstraat 46
Rotterdam 3047 AC
The Netherlands
Tel: + 31-10-240-40-20
Fax: + 31-10-240-40-29
email: sales.europe@exsif.com

EXSIF Worldwide, Inc.
1225 North Loop West, Suite 300
Houston, TX 77008
United States
Tel: + 1-713-869-9988
Fax: + 1-713-869-7827
email: sales.americas@exsif.com

EXSIF Worldwide, Inc.
80 Anson Road
#24-01A Fuji Xerox Towers
Singapore 079907
Tel: + 65-6224-2633
Fax: + 65-6224-2634
email: sales.asia@exsif.com

EXSIF Worldwide, Inc.
Shanghai Kerry Center
Unit 1502
1515 West Nanjing Road
Shanghai 200040
People's Republic of China
Tel: + 86-21-6289-1230
Fax: + 86-21-6289-1223
email: sales.china@exsif.com

EXSIF
WORLDWIDE

Visit our web site www.exsif.com

Headquarters: EXSIF Worldwide, Inc., 2700 Westchester Avenue, Suite 400, Purchase, NY 10577, United States.
Tel: + 1-914-848-4200 Fax: + 1-914-848-4201 Contact: contact@exsif.com