

T11 35,000 LITRE

Swap Body Tank

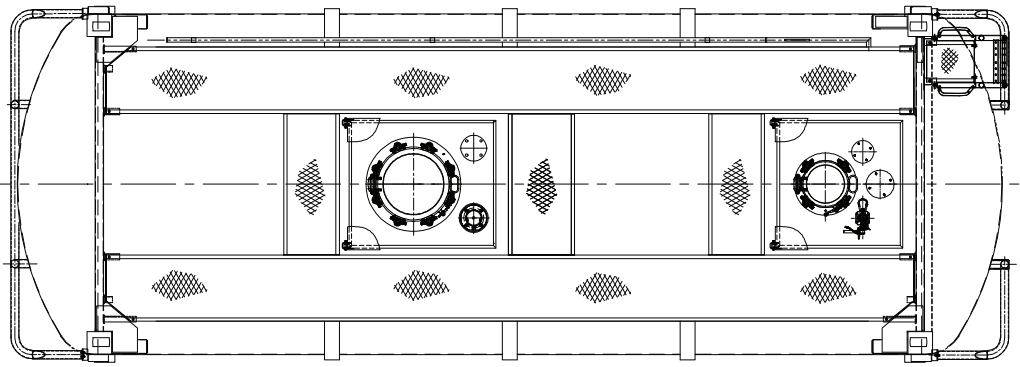
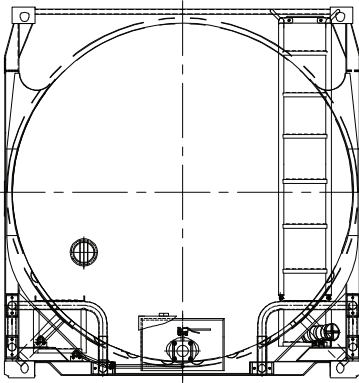


35,000 LITRE

EXSIF
WORLDWIDE



A Marmon Group/Berkshire Hathaway Company



T11 35,000 LITRE

Swap Body Tank

General Specification

Dimensions	mm	ft-in	Weights	kgs	lbs	Steam and Glycol Heating Systems	7 off runs producing an effective heating area of 10 m ² . 4 bar (58 psi) working pressure with 1" BSP inlet and 1" BSP outlet connections. Provisions for fitting a Glycol system.
Length	7820	25' 8"	Tare	4,165	9,182		
Width	2550	8' 4"	Max Payload	31,835	70,184		
Height	2670	8' 9"	Fittings				
Capacity	Litres	Gallons	Manlid	Fort Vale 500mm, fully hinged with 8 fixings. 300mm rear cleaning port.			
	35,000	7,720	Air Line	2" Fort Vale stainless steel butterfly valve with a 2" BSP termination.		Walkway	Full walkway and handrail options.
Shell Material	316L Stainless Steel		Bottom Outlet	3" 45° stainless steel steam heated foot valve, butterfly valve with a 3" BSP termination. Remote closure system fitted.		Insulation	50mm aluminium foil backed/rockwool insulation with outer cladding of white GRP.
Barrel/Head Thickness	4.2/5.6mm (0.165/0.22")		Top Outlet	3" nominal bore dual drilled pad, closed by a blind flange.		Approvals	UN Portable tank (T11) IMDG, CFR49, ADR/RID, UIC, TIR, CSC, TC, ADR L4BN. UIC codification plates.
Pressures	Working = 4 Bar (58.0 psi) Test = 6 Bar (87.0 psi) Vacuum = 0.4 Bar (5.9 psi)		Spare Connection	3" nominal bore dual drilled pad, closed by a blind flange.		Options	Electrical heating. Baffles. Compartments. Glycol system.
Design Temp	130°C (266°F)		Safety Relief Valve	Flanged pressure only valve. Set at 4.4 Bar.			
Design Code	ASME VIII Division 1		Thermometer	Surface type gauge reading -40°C to +160°C (-40°F/+320°F).			
External Finish	3 coat system with zinc rich primer.						
Internal Finish	Cold rolled ASTM 2B, interior acid cleaned and certified for the carriage of foodstuff.						

Note: The above information is an average representation of technical data. Please consult your EXSIF Worldwide representative for more specific data.

EXSIF Worldwide, Inc.
Corkstraat 46
Rotterdam 3047 AC
The Netherlands
Tel: + 31-10-240-40-20
Fax: + 31-10-240-40-29
email: sales.europe@exsif.com

EXSIF Worldwide, Inc.
1225 North Loop West, Suite 300
Houston, TX 77008
United States
Tel: + 1-713-869-9988
Fax: + 1-713-869-7827
email: sales.americas@exsif.com

EXSIF Worldwide, Inc.
80 Anson Road
#24-01A Fuji Xerox Towers
Singapore 079907
Tel: + 65-6224-2633
Fax: + 65-6224-2634
email: sales.asia@exsif.com

EXSIF Worldwide, Inc.
Shanghai Kerry Center
Unit 1502
1515 West Nanjing Road
Shanghai 200040
People's Republic of China
Tel: + 86-21-6289-1230
Fax: + 86-21-6289-1223
email: sales.china@exsif.com

EXSIF
WORLDWIDE

Visit our web site www.exsif.com

Headquarters: EXSIF Worldwide, Inc., 2700 Westchester Avenue, Suite 400, Purchase, NY 10577, United States.
Tel: + 1-914-848-4200 Fax: + 1-914-848-4201 Contact: contact@exsif.com